

FW

2024

TT Gertika



Introducing TT Gertika—our new expressive typeface that blends contemporary and archaic!

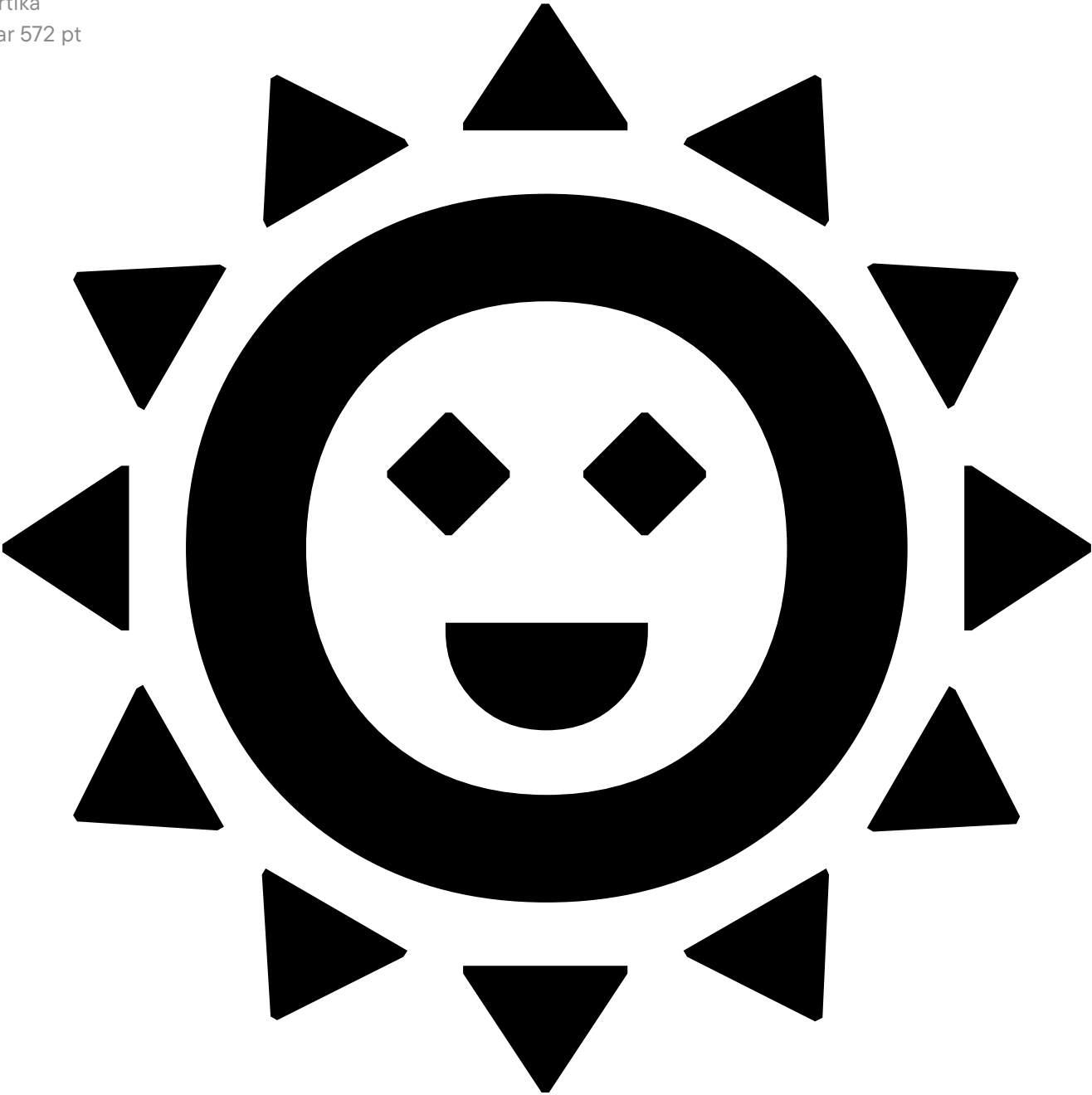
TT Gertika is a geometric sans serif with a dynamic character and a dancing rhythm. This font's idea originates from the lettering featured on an American poster from the late 1930s. We saw many peculiar and eye-catching details in the letters and decided to reimagine them. As a result, we got a font that alludes to something ancient and primitive while still being modern.

TT Gertika stands out for its rough diagonal stroke cuts at a 90° angle, sharp and "straightforward" intersections of letter

elements, asymmetrical, sharp terminals in glyphs like "S," "C," and "3," which contrast with the overall geometric quality of the forms, and noticeably dynamic proportions. It is also curious that we designed different diacritical marks for wide and narrow characters.

Due to stylistic sets, the mood and visual features of the font may transform dramatically: you can make it look more strict and dynamic or, in contrast, rounded and fluid. In addition, the typeface includes a variable font with a weight variation axis. This makes the mood of TT Gertika even easier to adapt to your needs.

TT Gertika  
Regular 572 pt

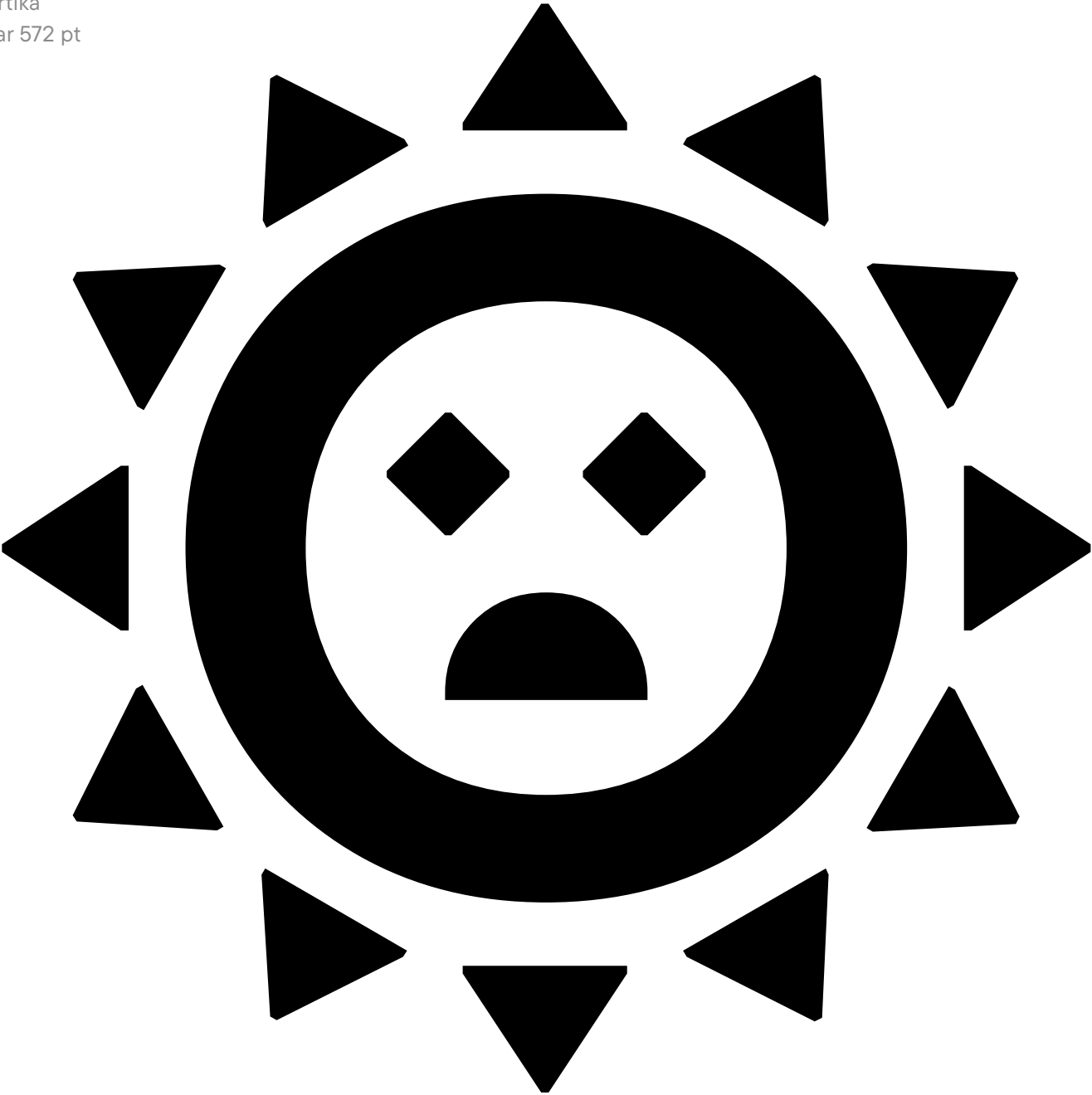


TT Gertika is well-suited for accent placement and shines best in large point sizes. However, it works well enough in small text blocks as well. This font is an excellent choice for covers of books and magazines dedicated to art. It can effortlessly adorn the exhibition environment and blend harmoniously with brand identities inspired by folklore and works from the primitivist genre.

TT Gertika



TT Gertika  
Regular 572 pt





TT Gertika includes:

- 4 font styles: 3 roman and one variable font;
- 922 characters in each font style;
- 4 stylistic sets;
- 28 OpenType features;
- 230+ supported languages.

triangle dots  
asymmetrical terminal cuts  
90° stroke cuts  
C Ö Å a

Aa Bb Cc Dd Ee  
Ff Gg Hh Ii Jj Kk  
Ll Mm Nn Oo Pp  
Qq Rr Ss Tt Uu Vv  
Ww Xx Yy Zz  
0 1 2 3 4 5 6 7 8 9  
@ # \$ % & \* ! ?  
а б в г д е ё ж з



1 Rglr  
2 Bold  
3 Black

85 PT

75 PT

50 PT

35 PT

25 PT

Engraving  
Practice  
of incising

Historically im-  
portant method  
of printmaking

Replaced by various  
photographic process-  
es in commercial area

Engravers typically trained in  
such countries as Italy and Bel-  
gium, where hand engraving  
has a rich and long heritage



VARIABLE FONT

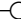
TT GERTIKA

TT GERTIKA

VARIABLE FONT

TT Gertika has one variable font. To use the variable font on Mac you must have MacOS 10.14 or a newer version. An important clarification — not all programs support variable technologies yet, you can check the support status here: [v-fonts.com/support/](https://v-fonts.com/support/).

TT Gertika  
Variable 315 pt

400  900  
WEIGHT

Variable

## SS01 — Alternative angles

Ŵŵ → Ŵ̸ŵ̸

## SS02 — Tilted letters

ÆΦ → ÆØ

## SS03 — Alternative Latin E

EƆ → €œ

## SS04 — Straight j

ljNj → lĭNĭ

TT Gertika  
Regular

## 72 PT

Tool geometry is extremely important for accu-

## 48 PT

Tool geometry is extremely important for accuracy in hand engraving. When sharpened for most ap-

## 36 PT

Tool geometry is extremely important for accuracy in hand engraving. When sharpened for most applications, a graver has a "face", which is the top of the graver, and

TT Gertika  
Regular

72 PT

**Tool geometry  
is extremely im-  
portant for ac-**

48 PT

**Tool geometry is ex-  
tremely important for  
accuracy in hand engrav-  
ing. When sharpened**

36 PT

**Tool geometry is extremely im-  
portant for accuracy in hand en-  
graving. When sharpened for  
most applications, a graver has  
a "face", which is the top of the**

72 PT

**Tool geometry  
is extremely im-  
portant for ac-**

48 PT

**Tool geometry is ex-  
tremely important for  
accuracy in hand engrav-  
ing. When sharpened**

36 PT

**Tool geometry is extremely im-  
portant for accuracy in hand  
engraving. When sharpened for  
most applications, a graver has  
a "face", which is the top of the**



The range of supported languages has expanded: now there are 230 of them.

CYRILLIC

Russian, Belarusian, Bosnian, Bulgarian, Macedonian, Serbian, Ukrainian, Kazakh, Kirghiz, Tadzhik, Turkmen, Uzbek, Lezgian, Abazin, Agul, Archi, Avar, Dargwa, Ingush, Kabardian, Kabardino-Cherkess, Karachay-Balkar, Khvarshi, Kumyk, Lak, Nogai, Rutul, Tabasaran, Tsakhur, Buryat, Siberian Tatar, Tofalar, Touva, Bashkir, Chechen, Chuvash, Erzya, Kryashen Tatar, Mordvin-moksha, Tatar Volgaic, Uighur, Rusyn, Montenegrin, Romani, Dungan, Karakalpak, Shughni, Mongolian, Adyghe, Kalmyk

LATIN

English, Albanian, Basque, Catalan, Croatian, Czech, Danish, Dutch, Estonian, Finnish, French, German, Hungarian, Icelandic, Irish, Italian, Latvian, Lithuanian, Luxembourgish, Maltese, Moldavian, Montenegrin, Norwegian, Polish, Portuguese, Romanian, Serbian, Slovak, Slovenian, Spanish, Swedish, Swiss German, Valencian, Azerbaijani, Kazakh, Turkish, Uzbek, Acehnese, Banjar, Betawi, Bislama, Boholano, Cebuano, Chamorro, Fijian, Filipino, Hiri Motu, Ilocano, Indonesian, Javanese, Khasi, Malay, Marshallese, Minangkabau, Nauruan, Nias, Palauan, Rohingya, Salar, Samoan, Sasak, Sundanese, Tagalog, Tahitian, Tetum, Tok Pisin, Tongan, Uyghur, Afar, Asu, Aymara, Bemba, Bena, Chichewa, Chiga, Embu, Gikuyu, Gusii, Jola-Fonyi, Kabuverdianu, Kalenjin, Kamba, Kikuyu, Kinyarwanda, Kirundi, Kongo, Luba-Kasai, Luganda, Luo, Luyia, Machame, Makhuwa-Meetto, Makonde, Malagasy, Mauritian Creole, Meru, Morisyen, Ndebele, Nyankole, Oromo, Rombo, Rundi, Rwa, Samburu, Sango, Sangu, Sena, Seychellois Creole, Shambala, Shvona, Soga, Somali, Sotho, Swahili, Swazi, Taita, Teso, Tsonga, Tswana, Vunjo, Wolof, Xhosa, Zulu, Ganda, Maori, Alsatian, Aragonese, Arumanian, Asturian, Belarusian, Bosnian, Breton, Bulgarian, Colognian, Cornish, Corsican, Esperanto, Faroese, Frisian, Friulian, Gaelic, Gagauz, Galician, Interlingua, Judaeo-Spanish, Karaim, Kashubian, Ladin, Leonese, Manx, Occitan, Retho-Romance, Romansh, Scots, Silesian, Sorbian, Vastese, Volapük, Võro, Walloon, Walser, Welsh, Karakalpak, Kurdish, Talysh, Tsakhur (Azerbaijan), Turkmen, Zaza, Aleut, Cree, Haitian Creole, Hawaiian, Innu-aimun, Lakota, Karachay-Balkar, Karelian, Livvi-Karelian, Ludic, Tatar, Vepsian, Guarani, Nahuatl, Quechua

şùppôrtś  
maný  
diffěreñt  
lǎṅguåǵęs  
žtǣĩă



## SPANISH

La imágen se consigue retirando material de la plancha o matriz con distintas herramientas: entre

## FRENCH

Cet art graphique consiste à inciser ou à creuser à l'aide d'un outil ou d'un mordant une matrice.

## RUSSIAN

Существуют разные виды гравировки камня: ручная гравировка камня, лазерная грави-

## BULGARIAN

Материалите, които могат да се използват за гравуране са гърбо, сребро, злато, мед,

## FINNISH

Kaivertajat käyttävät karkeastusta tarpeeksi valmistettua työkalua, kaiverrinta, leikkaamaan

## SWEDISH

Detta ska skiljas från etsning, där man nyttjar en liknande etsnål för att skapa kanaler ner till etsplå-

[illegible]

ABCDEFGHI  
JKLMNOPQR  
STUVWXYZ  
abcdefghi  
jklmnopqr  
stuvwxyz  
0123456789





TABULAR FIGURES

NUMERATORS

DENOMINATORS

SUPERSCRIPPTS

SUBSCRIPTS

CASE SENSITIVE

DLIG

SS01 — Alternative angles

SS02 — Tilted letters

SS03 — Alternative Latin E

SS04 — Straight j

SS05 — Romanian Comma Accent

SS06 — Dutch IJ

SS07 — Catalan Ldot

SS08 — Turkish i

SS09 — Bashkir localization

SS010 — Chuvash localization

SS011 — Bulgarian localization

SS012 — Serbian localization

1234567890

H12345

H12345

H12345

H12345

[{(H)}]

1/2 1/4 1/7

F M W Y

Æ Ë Ø Ñ

E Æ Œ

Lj j ff nj j

Șș Țț

IJ ij Íí Îî

L·L l·l

İ

Ғғ Җҗ Çç

Çç

ФВГДЗИКТЩЮ

Б

1234567890

H<sup>12345</sup>

H<sub>12345</sub>

H<sup>12345</sup>

H<sub>12345</sub>

[{(H)}]

½ ¼ ⅓

F M W Y

Æ Ë Ø Ñ

E Æ Œ

Lj j ff nj j

Șș Țț

IJ ij Íí Îî

L·L l·l

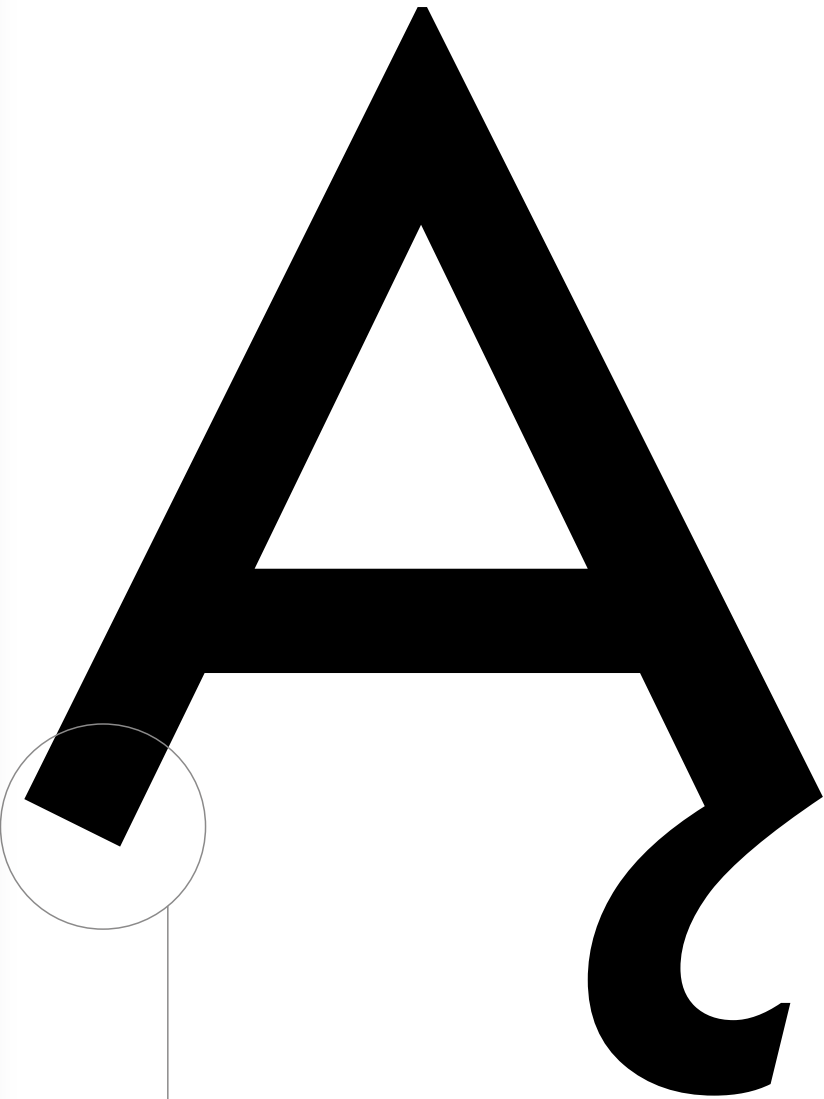
İ

Ғғ Җҗ Çç

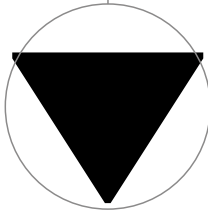
Çç

ФВҒгзуктщю

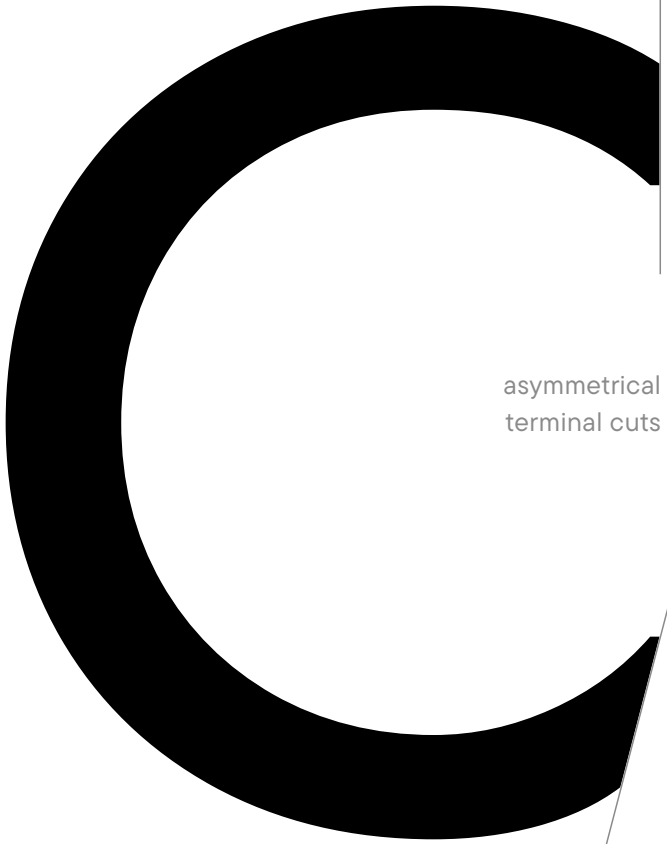
Б



triangle dots



90° stroke cuts



asymmetrical  
terminal cuts









TypeType company was founded in 2013 by Ivan Gladkikh, a type designer with a 10 years' experience, and Alexander Kudryavtsev, an experienced manager. Over the past 10 years we've released more than 75+ families, and the company has turned into a type foundry with a dedicated team.

Our mission is to create and distribute only carefully drawn, thoroughly tested, and perfectly optimized type-faces that are available to a wide range of customers.

Our team brings together people from different countries and continents. This cultural diversity helps us to create truly unique and comprehensive projects.

Copyright © TypeType Foundry 2013–2024.  
All rights reserved.  
For more information about our fonts,  
please visit our website  
[www.typetype.org](http://www.typetype.org)

Most of the texts used in this specimen  
are from Wikipedia.



