



2025

TT Modernoir



Introducing TT Modernoir version 2.000! We've updated this experimental font, adding new glyphs, features, and alternates.

TT Modernoir is a display sans serif with dynamic proportions. In this font, the fluid lines and elegant forms of Art Nouveau are combined with the rhythm and improvisational freedom of jazz. During its creation, we were inspired by 20th-century French typography, as well as the aesthetic of film noir, which is reflected in the typeface's name.

The defining features of TT Modernoir are the significant difference in proportions between square and oval characters: the square characters are very narrow, while the oval ones, in contrast, are very wide. Curved legs lend the font a sense of refinement, while dynamic swirls create a sense of musical rhythm and movement.

A stylistic set with narrow proportions for square and oval characters allows for a more even texture in typesetting. In contrast, a set with underlined characters will increase the display quality where needed. The typeface also includes a so-called "curly set" with swirls in the 'S' and 'Z' characters and curved legs on characters like 'R' and 'Я'.

A small set of icons is included to diversify your designs, featuring distinctive black cats, arrows with heart-shaped tips, and musical notes. Useful features and a variable font, which changes along the weight axis, provide the flexibility to tailor the typeface for various tasks.

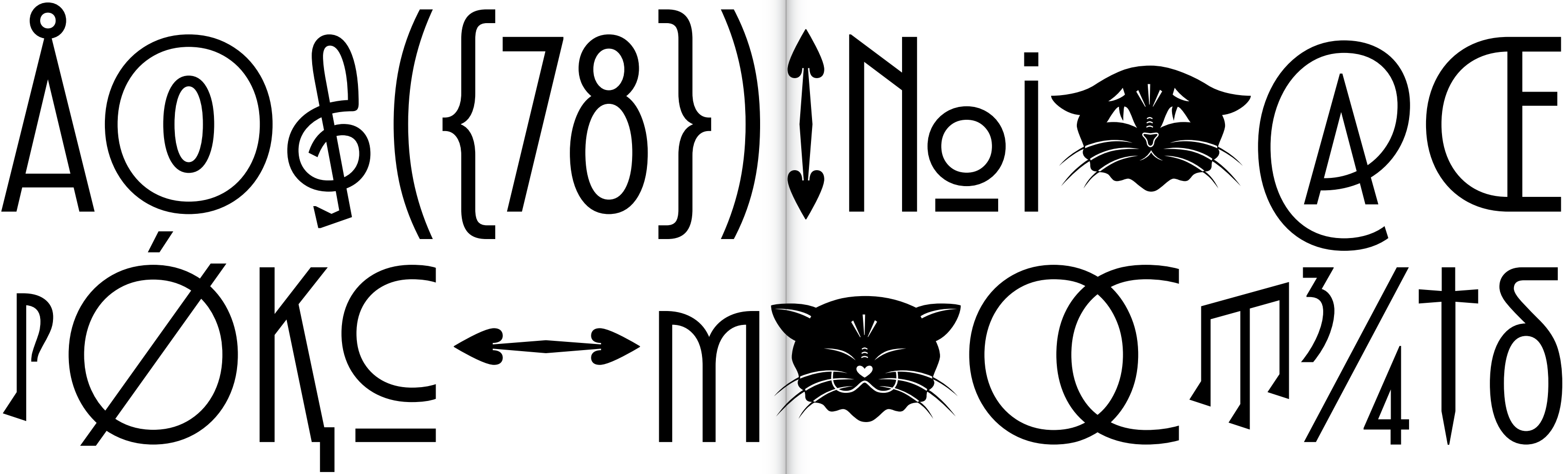
In the updated version, we have significantly expanded the character set. Most importantly, we've added a full lowercase set (the small capital letterforms from the previous version

can now be found in a small capital set). This greatly expands the typeface's functionality: whereas TT Modernoir was previously a title font with only uppercase forms, it now features a complete lowercase set. We also drew numerals and currency symbols for the minuscule and minuscule tabular figures. Additionally, we've added new OpenType features and stylistic sets. Specifically, more conventional alternate forms for triangular characters (Vv, Ww, y) and more decorative forms for 'a' and 'g'. These allow you to vary the font's level of decorative complexity and display character.

TT Modernoir works best at large point sizes. It is perfectly suited for event posters, signage, packaging design, magazine and book covers, as well as for branding and logos.



TT Modernoir  
Regular 182 pt





## TT Modernoir features:

- 6 styles: 5 uprights and 1 variable font
- 1,445 glyphs per style
- 38 OpenType features
- 17 stylistic sets
- Support for over 230 languages

Add sophistication and romance  
to your design with TT Modernoir!

Aa

AaBbCcDdEe  
FfGgHhIiJjKk  
LlMmNnOoPp  
QqRrSsTtUuVv  
WwXxYyZz  
0123456789  
@#&%&\*!?  
абвгдеёжз+|ăţîñ



1 Light  
2 Regular  
3 Medium  
4 DemiBold  
5 Bold

108 PT

96 PT

64 PT

32 PT

24 PT

# Art Nouveau

It was often  
inspired by

Natural forms such as  
the sinuous curves of  
plants and flowers.

Other characteristics of Art Nouveau  
were a sense of dynamism and movement  
often given by asymmetry or whiplash.

One major objective of Art Nouveau was to break  
down the traditional distinction between fine arts (es-  
pecially painting and sculpture) and applied arts. It was  
most widely used in interior design, graphic artworks.

TT Modernoir has one variable font. To use the variable font on Mac you must have MacOS 10.14 or a newer version. An important clarification — not all programs support variable technologies yet, you can check the support status here: [v-fonts.com/support/](https://v-fonts.com/support/).

# variable

300 WEIGHT 700

# variable

300 WEIGHT 700

TT Modernoir  
Variable 236 pt

64 PT

The first Art Nouveau houses and interior decoration appeared in Brussels in the 1890s, in the architecture and interior design.

36 PT

It moved quickly to Paris, where it was adapted by Hector Guimard, who saw Horta's work in Brussels and applied the style to the

entrances of the new Paris Métro. It reached its peak at the 1900 Paris International Exposition (from 14th April to 12th November 1900)

24 PT

From Britain, Art Nouveau spread to Belgium onto Spain and France, and then to the rest of Europe, taking on different names and characteristics in each country (see Naming section below). It often

appeared not only in capitals, but also in rapidly growing cities that wanted to establish artistic identities (Turin and Palermo in Italy; Glasgow in Scotland; Munich and Darmstadt in Germany; Barcelona in

Catalonia, Spain), as well as in centres of independence movements (Helsinki in Finland, part of the Russian Empire). By 1914, with the beginning of the First World War, Art Nouveau was largely exhausted.

TT Modernoir  
Light

64 PT

The first Art Nouveau houses and interior decoration appeared in Brussels in the 1890s, in the architecture and interior design.

36 PT

It moved quickly to Paris, where it was adapted by Hector Guimard, who saw Horta's work in Brussels and applied the style to the entrances of the new Paris Métro. It reached its peak at the 1900 Paris International Exposition (from 14th April to 12th November)

24 PT

From Britain, Art Nouveau spread to Belgium onto Spain and France, and then to the rest of Europe, taking on different names and characteristics in each country (see Naming section below).

It often appeared not only in capitals, but also in rapidly growing cities that wanted to establish artistic identities (Turin and Palermo in Italy; Glasgow in Scotland; Munich and Darmstadt in

Germany; Barcelona in Catalonia, Spain), as well as in centres of independence movements (Helsinki in Finland). By 1914, with the beginning of the First World War, Art Nouveau was largely exhausted.

64 PT

The first Art Nouveau houses and interior decoration appeared in Brussels in the 1890s, in the architecture and interior.

36 PT

It moved quickly to Paris, where it was adapted by Hector Guimard, who saw Horta's work in Brussels and applied the style to the entrances of the new Paris Métro. It reached its peak at the 1900 Paris International Exposition (from 14 April to 12 No-

24 PT

From Britain, Art Nouveau spread to Belgium onto Spain and France, and then to the rest of Europe, taking on different names and characteristics in each country (see Naming

section below). It often appeared not only in capitals, but also in rapidly growing cities that wanted to establish artistic identities (Turin and Palermo in Italy; Glasgow in Scotland;

Munich and Darmstadt in Germany; Barcelona in Catalonia, Spain), as well as in centres of independence movements (Helsinki in Finland). By 1914, Art Nouveau was largely exhausted.

64 PT

**The first Art Nouveau houses and interior decoration appeared in Brussels in the 1890s, in the architecture design.**

36 PT

**It moved quickly to Paris, where it was adapted by Hector Guimard, who saw Horta's work in Brussels and applied the style to the entrances of the new Paris Métro. It reached its peak at the 1900 Paris International Exposition**

24 PT

**From Britain, Art Nouveau spread to Belgium onto Spain and France, and then to the rest of Europe, taking on different names and characteristics in each country (see Naming section below). It often appeared not only in capitals, but also in rapidly growing cities that wanted to establish artistic identities (Turin and Palermo in Italy; Glasgow in**

**Scotland; Munich and Darmstadt in Germany; Barcelona in Catalonia, Spain), as well as in centres of independence movements. By 1914, Art Nouveau was largely exhausted.**

64 PT

**The first Art Nouveau houses and interior decoration appeared in Brussels in the 1890s, in the architecture.**

36 PT

**It moved quickly to Paris, where it was adapted by Hector Guimard, who saw Horta's work in Brussels and applied the style to the entrances of the new Paris Métro. It reached its peak at the 1900 Paris International Expo.**

24 PT

**From Britain, Art Nouveau spread to Belgium onto Spain and France, and then to the rest of Europe, taking on different names and characteristics in each country**

**(see Naming section below). It often appeared not only in capitals, but also in rapidly growing cities that wanted to establish artistic identities (Turin and Palermo**

**in Italy; Glasgow in Scotland; Munich and Darmstadt in Germany, as well as in centres of independence movements. By 1914, Art Nouveau was largely exhausted.**





TT Modernoir supports a wide range of languages. You can type in over 230 of them.

CYRILLIC

LATIN

Russian, Belarusian, Bosnian, Bulgarian, Macedonian, Serbian, Ukrainian, Kazakh, Kirghiz, Tadjik, Turkmen, Uzbek, Lezgian, Abazin, Agul, Archi, Avar, Dargwa, Ingush, Kabardian, Kabardino-Cherkess, Karachay-Balkar, Khvarshi, Kumyk, Lak, Nogai, Rutul, Tabasaran, Tsakhur, Buryat, Siberian Tatar, Tofalar, Touva, Bashkir, Chechen, Chuvash, Erzya, Kryashen Tatar, Mordvin-moksha, Tatar Volgaic, Uighur, Rusyn, Montenegrin, Romani, Dungan, Karakalpak, Shughni, Mongolian, Adyghe, Kalmyk

English, Albanian, Basque, Catalan, Croatian, Czech, Danish, Dutch, Estonian, Finnish, French, German, Hungarian, Icelandic, Irish, Italian, Latvian, Lithuanian, Luxembourgish, Maltese, Moldavian, Montenegrin, Norwegian, Polish, Portuguese, Romanian, Serbian, Slovak, Slovenian, Spanish, Swedish, Swiss German, Valencian, Azerbaijani, Kazakh, Turkish, Uzbek, Acehnese, Banjar, Betawi, Bislama, Boholano, Cebuano, Chamorro, Fijian, Filipino, Hiri Motu, Ilocano, Indonesian, Javanese, Khasi, Malay, Marshallese, Minangkabau, Nauruan, Nias, Palauan, Rohingya, Salar, Samoan, Sasak, Sundanese, Tagalog, Tahitian, Tetum, Tok Pisin, Tongan, Uyghur, Afar, Asu, Aymara, Bemba, Bena, Chichewa, Chiga, Embu, Gikuyu, Gusii, Jola-Fonyi, Kabuverdianu, Kalenjin, Kamba, Kikuyu, Kinyarwanda, Kirundi, Kongo, Luba-Kasai, Luganda, Luo, Luyia, Machame, Makhuwa-Meetto, Makonde, Malagasy, Mauritian Creole, Meru, Morisyen, Ndebele, Nyankole, Oromo, Rombo, Rundi, Rwa, Samburu, Sango, Sangu, Sena, Seychellois Creole, Shambala, Shona, Soga, Somali, Sotho, Swahili, Swazi, Taita, Teso, Tsonga, Tswana, Vunjo, Wolof, Xhosa, Zulu, Ganda, Maori, Alsatian, Aragonese, Arumanian, Asturian, Belarusian, Bosnian, Breton, Bulgarian, Colognian, Cornish, Corsican, Esperanto, Faroese, Frisian, Friulian, Gaelic, Gagauz, Galician, Interlingua, Judaeo-Spanish, Karaim, Kashubian, Ladin, Leonese, Manx, Occitan, Rheto-Romance, Romansh, Scots, Silesian, Sorbian, Vastese, Volapük, Võro, Walloon, Walser, Welsh, Karakalpak, Kurdish, Talysh, Tsakhur (Azerbaijan), Turkmen, Zaza, Aleut, Cree, Haitian Creole, Hawaiian, Innu-aimun, Lakota, Karachay-Balkar, Karelian, Livvi-Karelian, Ludic, Tatar, Vepsian, Guarani, Nahuatl, Quechua

şùppòrts  
maný  
diffěreñt  
lǎṅgvaǵes  
Ẓtǣĩă



## PORTUGUESE

Art nouveau – ou arte nova é um estilo internacional de arquitetura e de artes decorativas – especialmente o início da arte aplicada à indústria que foi muito apreciado

## SERBIAN

Арт нуво — је интернационални стил уметности, архитектуре и примењене уметности, посебно декоративне уметности. Ова стил је познат под различитим називима

## DUTCH

De jugendstil of art nouveau is een kunststroming die tussen 1890 en 1914 op verschillende plaatsen in Europa populair was, voornamelijk als reactie op het vormverva-

## LITHUANIAN

Modernas (pranc. moderne – šiuolaikinis), kitaip art nouveau, jugendas – XIX a. pabaigos ir XX a. pradžios architektūros ir dailės stilius, paplitęs Europos ir Jungtinių

## TURKISH

Art Nouveau – arif dekoratif süslemele-  
rin ön plana çıktığı, kıvrımların ve bitki-  
sel desenlerin sıklıkla kullanıldığı bir sanat  
akımıdır. Köklerinin Londra merkezli Arts &

## NORWEGIAN

Jugendstil, eller art nouveau, var en internasjonal kunstbevegelse og stil innen billedkunst, arkitektur og kunsthåndverk – spesielt dekorativ kunst. Kunstretningen var mest populær



## LATIN UPPERCASE

A B C D E F G H I J K L M N O P Q R S T U V W X Y Z

## LATIN LOWERCASE

abcdefghijklmnopqrstuvwxyz

## FIGURES

0123456789 0123456789

## Cyrillic Uppercase

А Б В Г Д Е Ё Ж З И Й К Л М Н О П Р С Т У Ф Х Ц  
Ч Ш Щ Ъ Ы Ь Э Ю Я Ѓ Ѓ € \$ ! ¨ ª « ¬ ® ¯ ° ±

## CYRILLIC LOWERCASE

абвгдеёжзийклмнопрстуфхц  
чшщъыьэюяѓѓќѕіїјљњћђџ

## EXTENDED LATIN

[illegible]

## EXTENDED CYRILLIC

Ä F F È Ê Ж З Ъ Й Ì К К Ñ Ò Ó Ç Ç Ç Ÿ Ÿ Ÿ Ҫ Ҫ Ъ Ъ Ъ  
ä f f è ê ж з ъ й ì к к ñ ò ó ç ç ç ŷ ŷ ŷ ҫ ҫ ҫ ҫ ҫ

## PUNCTUATION

·...,:;!|?;̀i\*'"',,,'''''<>«»\*---\_() [ ] { } | ! † ‡ / \ # № & § ¶ © ® ™ ® ° ^

## MATH SYMBOLS

$$- + < > \leq \geq = \neq \sim \approx \neg \pm \times \div \% \text{‰} \mu^{\circ} / \text{‰}$$

## CURRENCY

ß Ç \$ € ¢ £ ₪ ₧ £ ⊆ ∅ ∩ ∪ ∖ ∞

## ICONS



## ARROWS

## LIGATURES

© © ¤

ET RS dt

**ty gt Ty**

cm12

OPENTYPE FEATURES

TT MODERNOIR

TABULAR FIGURES

TABULAR OLDSTYLE

PROPORTIONAL OLDSTYLE

NUMERATORS

DENOMINATORS

SUPERSCRIPTS

SUBSCRIPTS

FRACTIONS

ORDINALS

CASE SENSITIVE

STANDARD LIGATURES

DISCRETIONARY LIGATURES

CONTEXTUAL ALTERNATES

SMALL CAPS

CAPS TO SMALL CAPITALS

SS01—Condensed Ovals

SS02—Curly Letters

SS03—Underlined Letters

SS04—Alternative Straight Forms

SS05—Alternative Rounded Forms

SS06—Alternative r

SS07—Alternative l

SS08—Circled Figures

SS09—Negative Circled Figures

SS10—Romanian Comma Accent

1234567890

1234567890

1234567890

H12345

H12345

H12345

H12345

1/2 3/4

2a0

[{(H)}]

ff fj fi fl

CO ST RS gt ty

AA

abc defg

ABC DEFG

Ĉ Ǝ Ø Ɔ Ю €

Œ R DŽ Ÿ Я я

A O U

Ŭ Ů Ÿ

ǻ ǧ ǵ

í ř

Í Ĺ ł

12345

67890

Ș ț

1234567890

1234567890

1234567890

H<sup>12345</sup>

H<sub>12345</sub>

H<sup>12345</sup>

H<sub>12345</sub>

1½ ¾

2<sup>^o</sup>

[{(H)}]

ff fj fi fl

© ST RS gt ty

AA

A B C D E F G

A B C D E F G

Ĉ Ǝ Ø Ɔ Ю €

Œ R DŽ Ÿ Я я

A O U

Ŭ Ů Ÿ

ǻ ǧ ǵ

í ř

Í Ĺ ł

① ② ③ ④ ⑤

⑥ ⑦ ⑧ ⑨ ⑩

Ș ț

TT MODERNOIR

OPENTYPE FEATURES

SS11—Dutch IJ

SS12—Catalan Ldot

SS13—Turkish i

SS14—Bashkir localization

SS15—Chuvash localization

SS16—Bulgarian localization

SS17—Serbian localization

ÍĲ ĲĲ

L·L Ļ Ļ

İ İ

ƒ ƶ Ç ƒ ƶ Ç

Ç ç

В Г Д Ж П Т Ц

б

ÍĲ ĲĲ

L·L Ļ Ļ

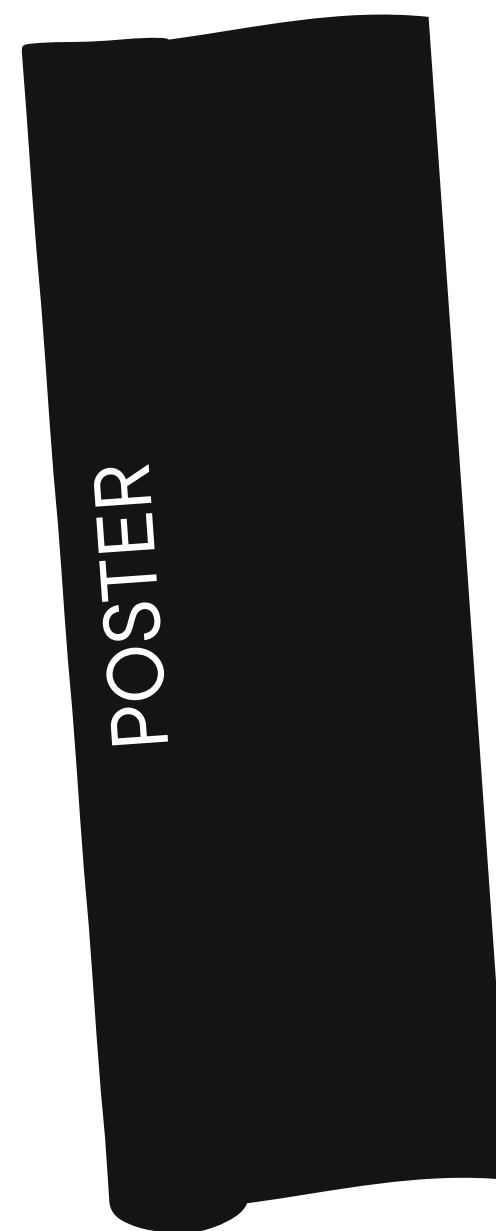
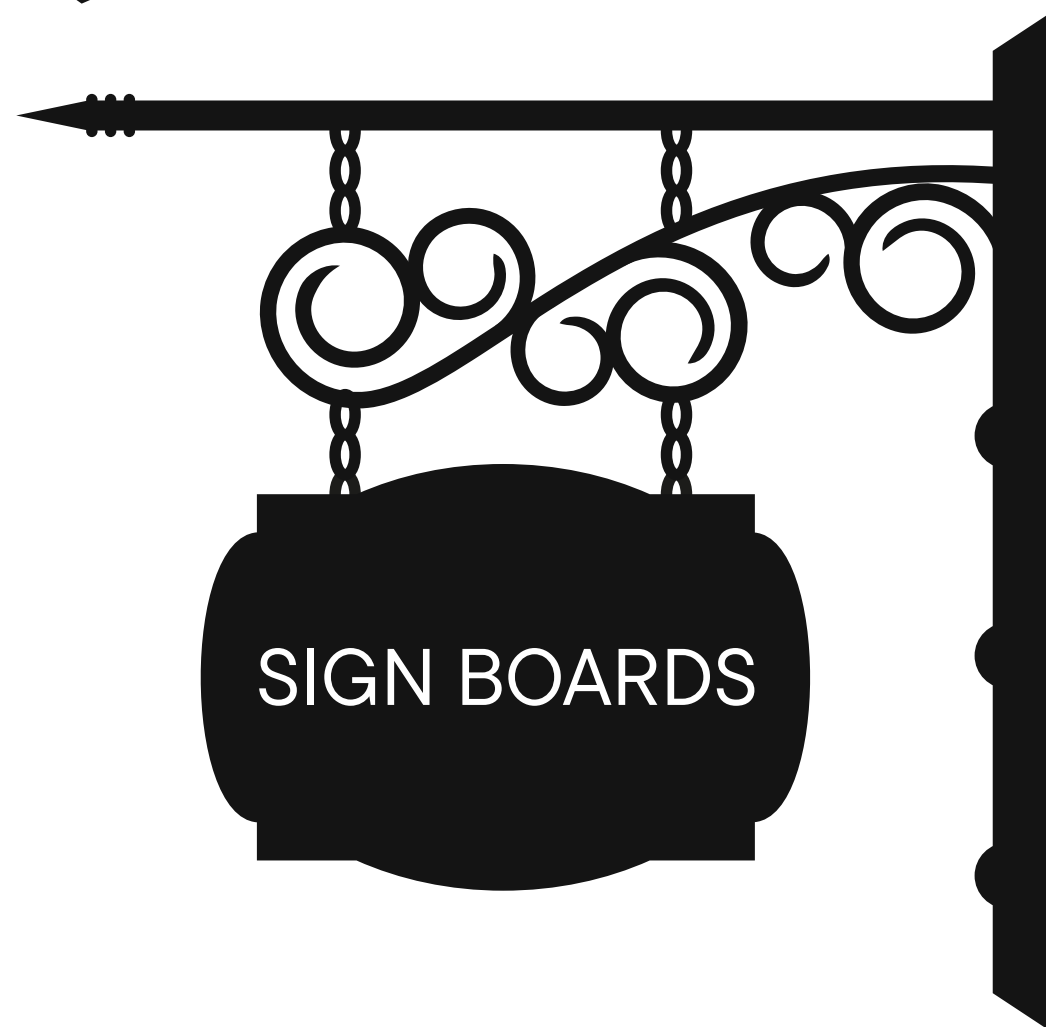
İ İ

ƒ ƶ Ç ƒ ƶ Ç

Ç ç

В Ɂ ɡ ʝ ɲ ɱ ɯ

δ





TypeType company was founded in 2013 by Ivan Gladkikh, a type designer with a 10 years' experience, and Alexander Kudryavtsev, an experienced manager. Over the past 10 years we've released more than 75+ families, and the company has turned into a type foundry with a dedicated team.

Our mission is to create and distribute only carefully drawn, thoroughly tested, and perfectly optimized type-faces that are available to a wide range of customers.

Our team brings together people from different countries and continents. This cultural diversity helps us to create truly unique and comprehensive projects.

Copyright © TypeType Foundry 2013–2025.

All rights reserved.

For more information about our fonts,  
please visit our website

[www.type.type.org](http://www.type.type.org)

Most of the texts used in this specimen  
are from Wikipedia.

