

2026



Meet the new TT Dott—an unusual font that redefines pixel aesthetics!

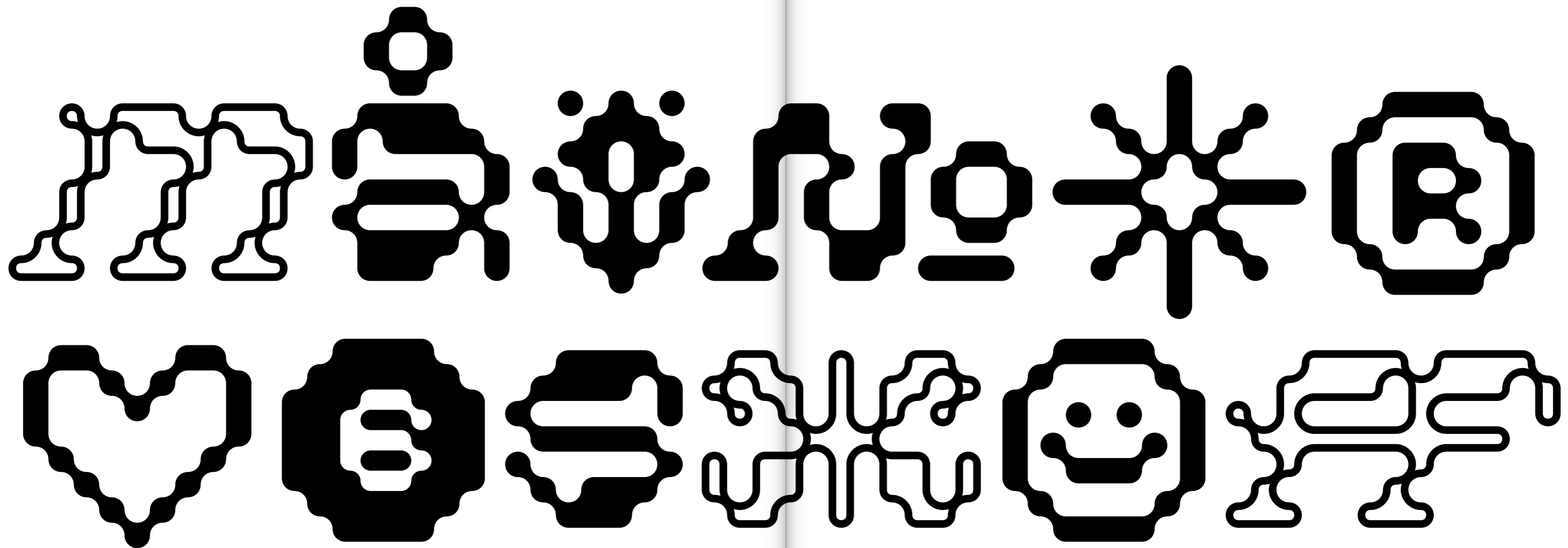
TT Dott is a display pixel grotesque. It is an experimental project created within our Creative Lab. The idea was to use a circle instead of a square as the base for the pixel, and to experiment with character shapes. We wanted to step away from the usual association with a pixel font—static and mechanistic—and create something completely different: fluid, alive, and rhythmic. Because of this, we made some glyphs slanted and others upright, adding dynamism and a sense of randomness to the font.

TT Dott turned out fluid and warm, evoking associations with embroidery, knitting, and techno parties all at once.

The typeface includes two font styles: Solid and Outline, which work perfectly on their own and can beautifully complement each other. It also features two stylistic sets: the main one—with slants in certain characters that give it dynamism and quirkiness—and a Static one, which is calmer, with upright characters. An extensive set of thematic icons expands the design possibilities even further.

TT Dott is a font for accents that works best in large sizes. It is suitable for exhibition and festival design, branding, and packaging design. With its help, you can add vibrancy and originality to a project, and in some cases, it will harmoniously fit into an ethnic theme.

TT Dott





TT Dott includes:

- 2 font styles: Solid and Outline
- 605 glyphs per style
- 14 OpenType features
- Support for over 120 languages

TT Dott  
Solid 270 pt

TT Dott  
Solid 270 pt

BASIC GLYPHS

TT Dott  
Solid 88 pt

RANDOMIZER

TT Dott  
Solid 88 pt

TT Dott  
Solid 88 pt



1 2 3 4  
 5 6 7 8 9 10 11 12 13 14 15 16 17 18 19 20 21 22 23 24 25 26 27 28 29 30 31 32 33 34 35 36 37 38 39 40 41 42 43 44 45 46 47 48 49 50 51 52 53 54 55 56 57 58 59 60 61 62 63 64 65 66 67 68 69 70 71 72 73 74 75 76 77 78 79 80 81 82 83 84 85 86 87 88 89 90 91 92 93 94 95 96 97 98 99 100  
 101 102 103 104 105 106 107 108 109 110 111 112 113 114 115 116 117 118 119 120 121 122 123 124 125 126 127 128 129 130 131 132 133 134 135 136 137 138 139 140 141 142 143 144 145 146 147 148 149 150 151 152 153 154 155 156 157 158 159 160 161 162 163 164 165 166 167 168 169 170 171 172 173 174 175 176 177 178 179 180 181 182 183 184 185 186 187 188 189 190 191 192 193 194 195 196 197 198 199 200

90 PT

75 PT

50 PT

35 PT

25 PT

LACE  
 DELICATE  
 FABRIC  
 MADE OF YARN  
 OR THREAD BY  
 MACHINE  
 GENERALLY, HAND-  
 MADE LACE IS SPLIT  
 INTO TWO MAIN cate-  
 gories, NEEDLE LACE  
 ORIGINALLY LINEN, SILK, GOLD,  
 OR SILVER THREADS WERE  
 USED. NOW LACE IS OFTEN  
 MADE WITH COTTON THREAD

90 PT

ආචාර්යවරුන්ගේ පාඨමාලාව  
 ආචාර්යවරුන්ගේ පාඨමාලාව

45 PT

ආචාර්යවරුන්ගේ පාඨමාලාව  
 ආචාර්යවරුන්ගේ පාඨමාලාව  
 ආචාර්යවරුන්ගේ පාඨමාලාව  
 ආචාර්යවරුන්ගේ පාඨමාලාව

30 PT

ආචාර්යවරුන්ගේ පාඨමාලාව  
 ආචාර්යවරුන්ගේ පාඨමාලාව  
 ආචාර්යවරුන්ගේ පාඨමාලාව  
 ආචාර්යවරුන්ගේ පාඨමාලාව

90 PT

ආචාර්යවරුන්ගේ පාඨමාලාව  
 ආචාර්යවරුන්ගේ පාඨමාලාව

45 PT

ආචාර්යවරුන්ගේ පාඨමාලාව  
 ආචාර්යවරුන්ගේ පාඨමාලාව  
 ආචාර්යවරුන්ගේ පාඨමාලාව  
 ආචාර්යවරුන්ගේ පාඨමාලාව

30 PT

ආචාර්යවරුන්ගේ පාඨමාලාව  
 ආචාර්යවරුන්ගේ පාඨමාලාව  
 ආචාර්යවරුන්ගේ පාඨමාලාව  
 ආචාර්යවරුන්ගේ පාඨමාලාව

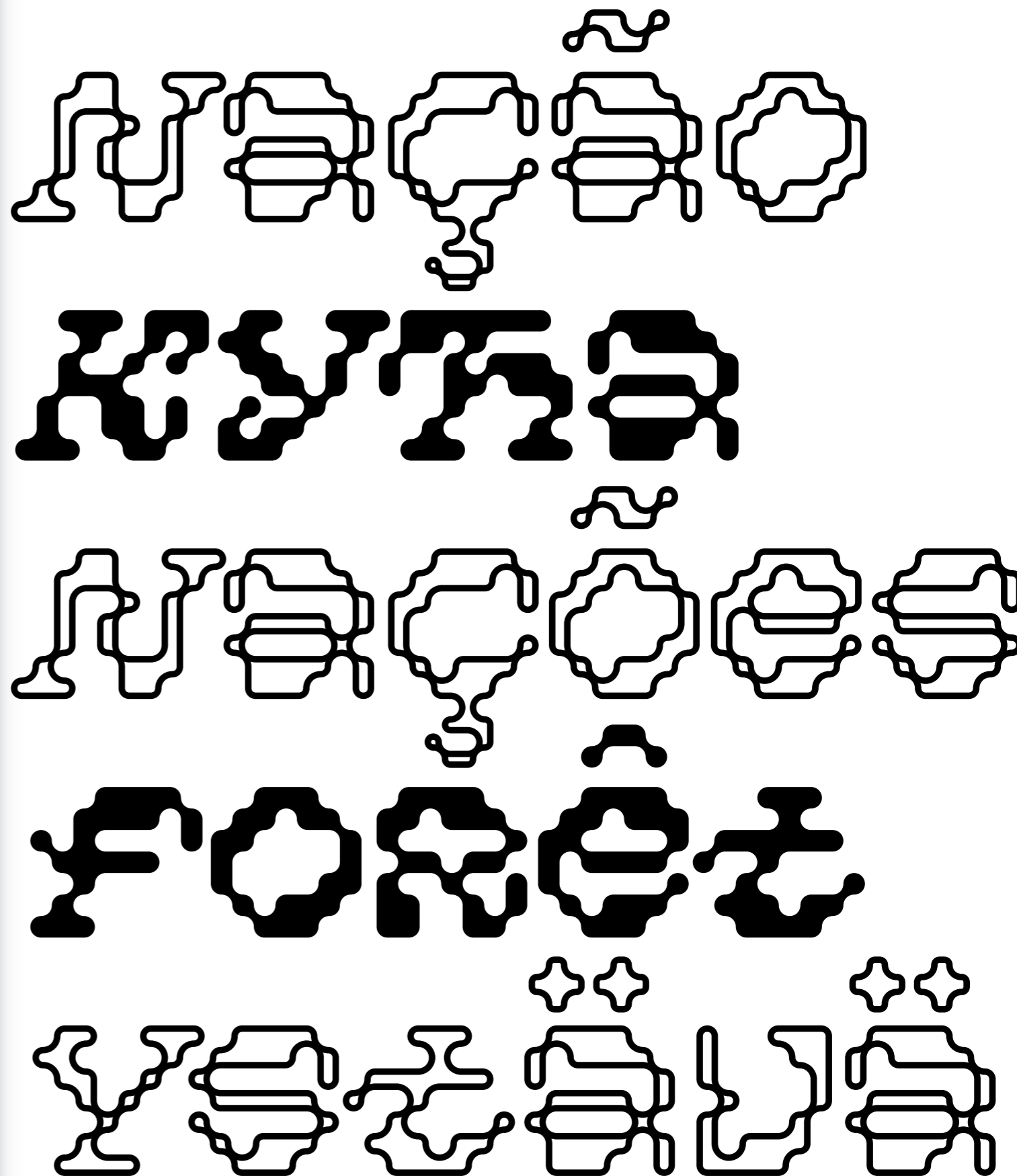
TT Dott supports more than 120 languages.

## CYRILLIC

Russian+, Belarusian, Bosnian, Bulgarian, Macedonian, Serbian, Ukrainian, Karachay-Balkar, Khvarshi, Kumyk, Nogai, Erzya, Mordvin-moksha, Rusyn, Montenegrin

## LATIN

English, Albanian, Basque, Danish, French, German, Irish, Italian+, Luxembourgish, Norwegian, Portuguese, Spanish, Swedish, Swiss German, Uzbek (lat), Acehnese, Banjar, Betawi, Bislama+, Boholano, Cebuano, Chamorro+, Fijian, Filipino+, Hiri Motu, Ilocano, Indonesian+, Javanese, Khasi, Malay, Minangkabauv, Nauruan, Nias, Palauan, Rohingya, Sundanese, Tagalog+, Tetum, Tok Pisin, Uyghur, Afar, Asu, Aymara, Bemba, Bena, Chiga, Embu, Gusii, Kabverdianu, Kalenjin, Kinyarwanda, Kirundi, Kongo, Luo, Luyia, Machame, Makuwa-Meetto, Makonde, Malagasy, Mauritian Creole, Morisyen, Ndebele, Nyankole, Oromo, Rombo, Rundi, Rwa, Samburu, Sango, SanguSena, Seychellois Creole, Shambala, Shona, Soga, Somali, Sotho+, Swahili, Swazi, Taita, Tsonga, Tswana, Vunjo, Xhosa, Zulu, Alsatian, Aragonese, Breton, Cornish, Corsican+, Friulian, Gaelic, Galician+, Interlingua, Judaeo-Spanish, Ladin, Leonese, Manx, Occitan, Rheto-Romance, Romansh, Scots, Volapük, Walloon, Cree, Haitian Creole



## SPANISH

ACCESORIOS COMO  
CORROS, GORRITAS Y  
OTRAS PRENDAS PARA  
EL QUELLO PAÑUELOS

## DANISH

ÅLBEHØR SÅSOM KÅ-  
SKEBEBER, KÅRBER OG  
ANDRE HÅLEBENNE  
LÅNMEKLEBEBER

## RUSSIAN

AKCECOBAPK, TAKME  
KAK POKOBIKHE BCOBK,  
COTAKMK-ABCO,  
MEHKHE BKPAHEMK

## PORTUGUESE

ACCESÓRIOS COMO  
BOLÉES, GÓLAS DE REN-  
DA E OUTRO TIPO PES-  
COÇO COMO LENÇÓES

## FINNISH

AKUOKETEK, KUKEN  
LAPPISKÖ, NÖYHELÖIKÖ  
JA MUKIK KÄPÄLÄLÄINÖ-  
JA SEKÖ NENÄLÄINÖJA

## SERBIAN

AKAKUM KAK YTO CY  
KAK, OKOBAKMKUM  
M AKUM BKPAOM BA  
BAK M MABAMME







OPENTYPE FEATURES

TT DOTT

TT DOTT

FONT DETAILS



NUMERATORS

*H1234*

*H<sup>1</sup>2<sup>3</sup>4*

DENOMINATORS

*H1234*

*H<sub>1</sub>2<sub>3</sub>4*

SUPERSCRIPTS

*H1234*

*H<sup>1</sup>2<sup>3</sup>4*

FRACTIONS

*1/2 3/4*

*½ ¾*

ORDINALS

*2<sup>nd</sup> 3<sup>rd</sup>*

*2<sup>nd</sup> 3<sup>rd</sup>*

STANDARD LIGATURES

*Œ œ*

*Œ œ*

DISCRETIONARY LIGATURES

*ft tt*

*ft tt*

SS01—Static set

*M X 1 No*

*M X 1 No*

SS02—Three-legged Cyrillic 'T'

*Т*

*Т*

SS03—Circled Figures

*⓪ ① ② ③*

*⓪ ① ② ③*

SS04—Negative Circled Figures

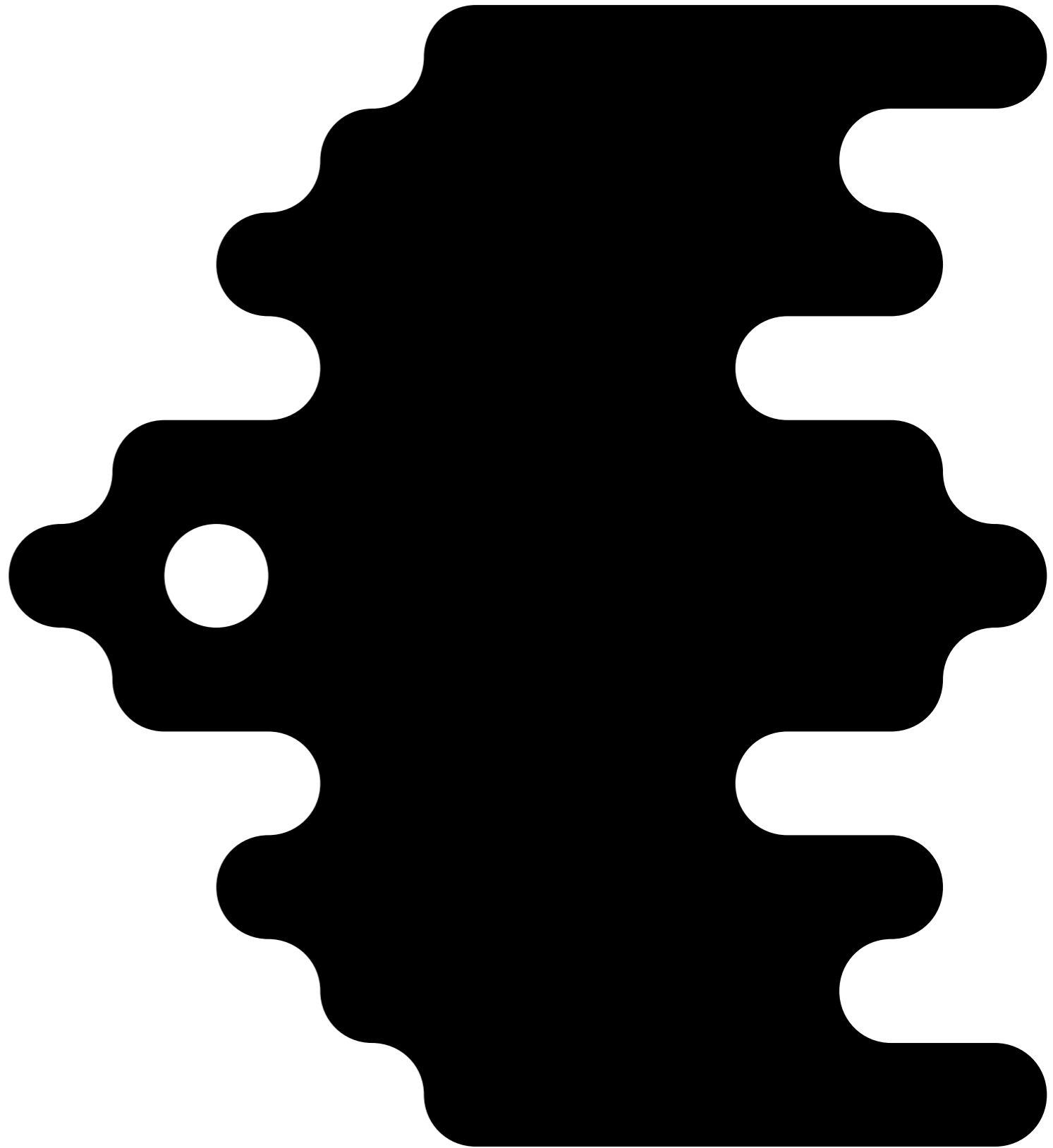
*⓪ ① ② ③*

*⓪ ① ② ③*

SS05—Randomizer

*RANDOMIZER*

*RANDOMIZER*





TypeType company was founded in 2013 by Ivan Gladkikh, a type designer with a 10 years' experience, and Alexander Kudryavtsev, an experienced manager. Over the past 10 years we've released more than 75+ families, and the company has turned into a type foundry with a dedicated team.

Our mission is to create and distribute only carefully drawn, thoroughly tested, and perfectly optimized type-faces that are available to a wide range of customers.

Our team brings together people from different countries and continents. This cultural diversity helps us to create truly unique and comprehensive projects.

Copyright © TypeType Foundry 2013–2026.  
 All rights reserved.  
 For more information about our fonts,  
 please visit our website  
[www.typetype.org](http://www.typetype.org)

Most of the texts used in this specimen  
 are from Wikipedia.

TT Dott



