

**EM**

2024

**TT Gertika**

Introducing TT Gertika—our new expressive typeface that blends contemporary and archaic!

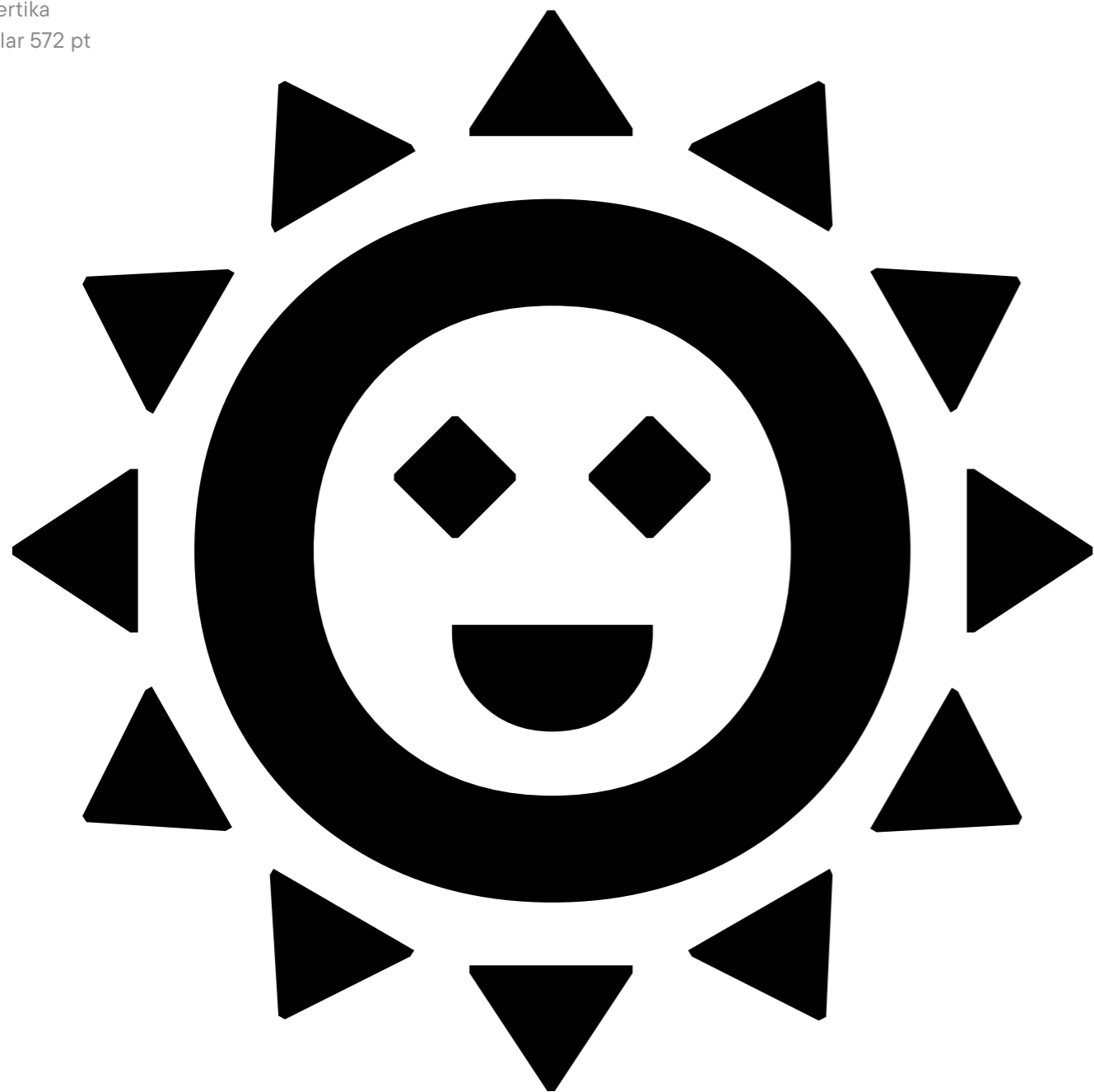
TT Gertika is a geometric sans serif with a dynamic character and a dancing rhythm. This font's idea originates from the lettering featured on an American poster from the late 1930s. We saw many peculiar and eye-catching details in the letters and decided to reimagine them. As a result, we got a font that alludes to something ancient and primitive while still being modern.

TT Gertika stands out for its rough diagonal stroke cuts at a 90° angle, sharp and "straightforward" intersections of letter

elements, asymmetrical, sharp terminals in glyphs like "S," "C," and "3," which contrast with the overall geometric quality of the forms, and noticeably dynamic proportions. It is also curious that we designed different diacritical marks for wide and narrow characters.

Due to stylistic sets, the mood and visual features of the font may transform dramatically: you can make it look more strict and dynamic or, in contrast, rounded and fluid. In addition, the typeface includes a variable font with a weight variation axis. This makes the mood of TT Gertika even easier to adapt to your needs.

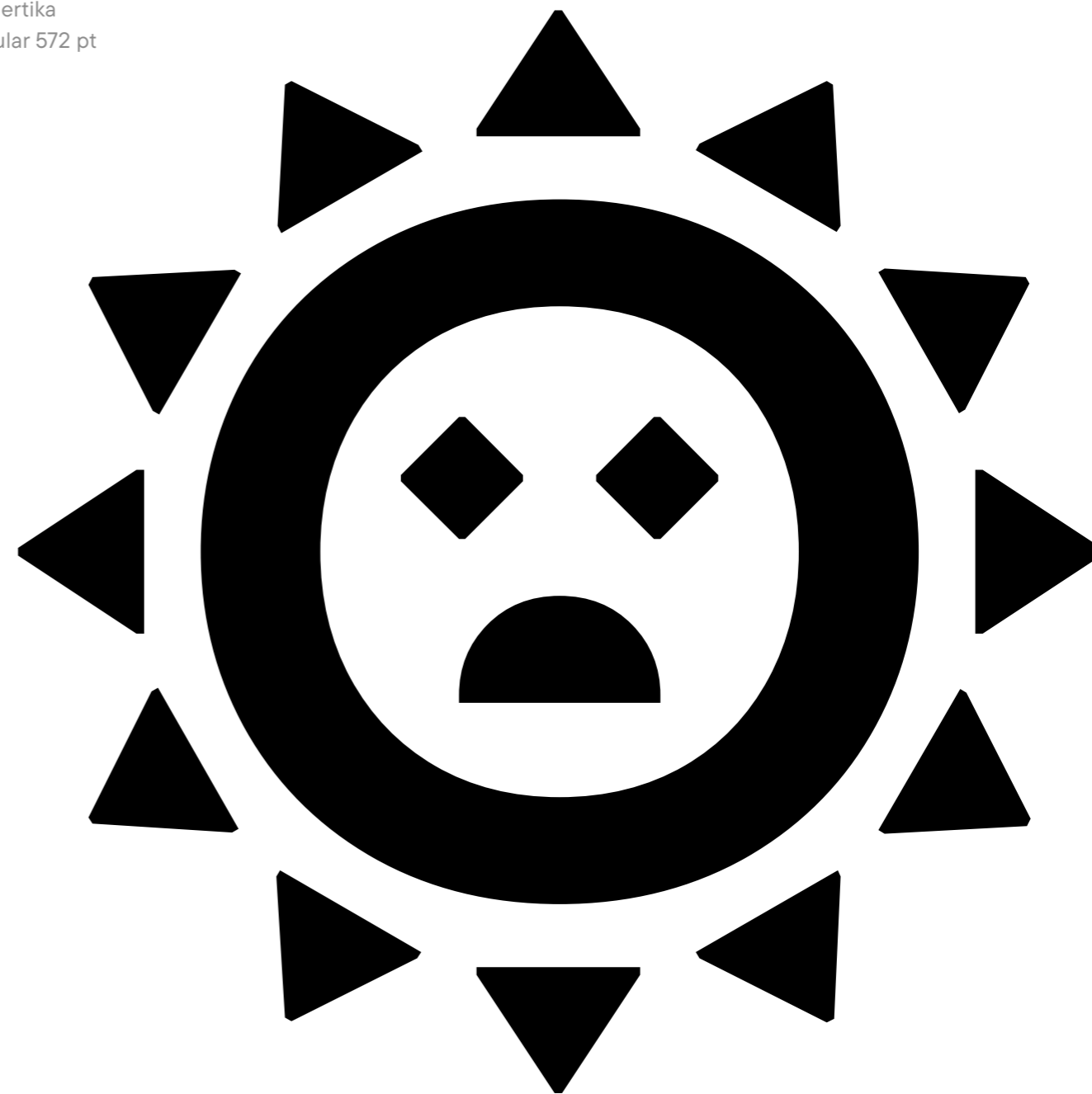
TT Gertika  
Regular 572 pt



TT Gertika is well-suited for accent placement and shines best in large point sizes. However, it works well enough in small text blocks as well. This font is an excellent choice for covers of books and magazines dedicated to art. It can effortlessly adorn the exhibition environment and blend harmoniously with brand identities inspired by folklore and works from the primitivist genre.

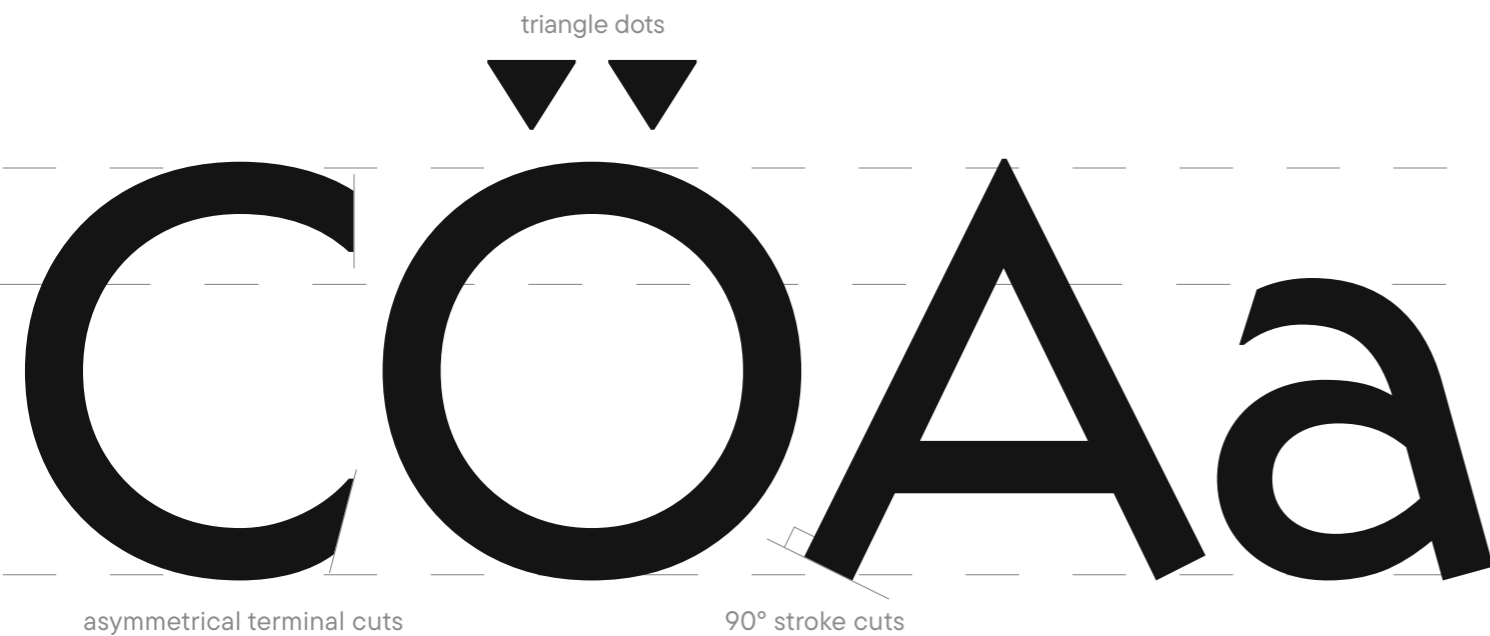
TT Gertika

TT Gertika  
Regular 572 pt



TT Gertika includes:

- 4 font styles: 3 roman and one variable font;
- 922 characters in each font style;
- 4 stylistic sets;
- 28 OpenType features;
- 230+ supported languages.



TT Gertika  
Regular 218 pt

Aa Bb Cc Dd Ee  
 Ff Gg Hh Ii Jj Kk  
 Ll Mm Nn Oo Pp  
 Qq Rr Ss Tt Uu Vv  
 Ww Xx Yy Zz  
 0 1 2 3 4 5 6 7 8 9  
 @ # \$ % & \* ! ?  
 а б в г д е ё ж з

TT Gertika  
Regular 80 pt

1 Rglr  
 2 Bold  
 3 Black

85 PT

75 PT

50 PT

35 PT

25 PT

# Engraving

## Practice of incising

Historically im-  
portant method  
of printmaking

Replaced by various  
photographic process-  
es in commercial area

Engravers typically trained in  
such countries as Italy and Bel-  
gium, where hand engraving  
has a rich and long heritage



VARIABLE FONT

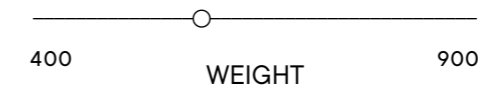
TT GERTIKA

TT GERTIKA

VARIABLE FONT

TT Gertika has one variable font. To use the variable font on Mac you must have MacOS 10.14 or a newer version. An important clarification — not all programs support variable technologies yet, you can check the support status here: [v-fonts.com/support/](https://v-fonts.com/support/).

TT Gertika  
Variable 315 pt



**Variabile**

## SS01 – Alternative angles

Ŵŵğ → Ŵŵğ

## SS02 – Tilted letters

ÆΦ → ÆØ

## SS03 – Alternative Latin E

EŒ → Eœ

## SS04 – Straight j

ljNj → ljNi

## 72 PT

Tool geometry is extremely important for accu-

## 48 PT

Tool geometry is extremely important for accuracy in hand engraving. When sharpened for most ap-

## 36 PT

Tool geometry is extremely important for accuracy in hand engraving. When sharpened for most applications, a graver has a "face", which is the top of the graver, and

72 PT

**Tool geometry is extremely important for ac-**

48 PT

**Tool geometry is extremely important for accuracy in hand engraving. When sharpened**

36 PT

**Tool geometry is extremely important for accuracy in hand engraving. When sharpened for most applications, a graver has a "face", which is the top of the**

72 PT

**Tool geometry is extremely important for ac-**

48 PT

**Tool geometry is extremely important for accuracy in hand engraving. When sharpened**

36 PT

**Tool geometry is extremely important for accuracy in hand engraving. When sharpened for most applications, a graver has a "face", which is the top of the**

The range of supported languages has expanded: now there are 230 of them.

## CYRILLIC

Russian, Belarusian, Bosnian, Bulgarian, Macedonian, Serbian, Ukrainian, Kazakh, Kirghiz, Tadjik, Turkmen, Uzbek, Lezgian, Abazin, Agul, Archi, Avar, Dargwa, Ingush, Kabardian, Kabardino-Cherkess, Karachay-Balkar, Khvarshi, Kumyk, Lak, Nogai, Rutul, Tabasaran, Tsakhur, Buryat, Siberian Tatar, Tofalar, Touva, Bashkir, Chechen, Chuvash, Erzya, Kryashen Tatar, Mordvin-moksha, Tatar Volgaic, Uighur, Rusyn, Montenegrin, Romani, Dungan, Karakalpak, Shughni, Mongolian, Adyghe, Kalmyk

## LATIN

English, Albanian, Basque, Catalan, Croatian, Czech, Danish, Dutch, Estonian, Finnish, French, German, Hungarian, Icelandic, Irish, Italian, Latvian, Lithuanian, Luxembourgish, Maltese, Moldavian, Montenegrin, Norwegian, Polish, Portuguese, Romanian, Serbian, Slovak, Slovenian, Spanish, Swedish, Swiss German, Valencian, Azerbaijani, Kazakh, Turkish, Uzbek, Acehnese, Banjar, Betawi, Bislama, Boholano, Cebuano, Chamorro, Fijian, Filipino, Hiri Motu, Ilocano, Indonesian, Javanese, Khasi, Malay, Marshallese, Minangkabau, Nauruan, Nias, Palauan, Rohingya, Salar, Samoan, Sasak, Sundanese, Tagalog, Tahitian, Tetum, Tok Pisin, Tongan, Uyghur, Afar, Asu, Aymara, Bemba, Bena, Chichewa, Chiga, Embu, Gikuyu, Gusii, Jola-Fonyi, Kabuverdianu, Kalenjin, Kamba, Kikuyu, Kinyarwanda, Kirundi, Kongo, Luba-Kasai, Luganda, Luo, Luyia, Machame, Makhwa-Meetto, Makonde, Malagasy, Mauritian Creole, Meru, Morisyen, Ndebele, Nyankole, Oromo, Rombo, Rundi, Rwa, Samburu, Sango, Sangu, Sena, Seychellois Creole, Shambala, Shvona, Soga, Somali, Sotho, Swahili, Swazi, Taita, Teso, Tsonga, Tswana, Vunjo, Wolof, Xhosa, Zulu, Ganda, Maori, Alsatian, Aragonese, Arumanian, Asturian, Belarusian, Bosnian, Breton, Bulgarian, Cognian, Cornish, Corsican, Esperanto, Faroese, Frisian, Friulian, Gaelic, Gagauz, Galician, Interlingua, Judaeo-Spanish, Karaim, Kashubian, Ladin, Leonese, Manx, Occitan, Retho-Romance, Romansh, Scots, Silesian, Sorbian, Vastese, Volapük, Võro, Walloon, Walsler, Welsh, Karakalpak, Kurdish, Talysh, Tsakhur (Azerbaijan), Turkmen, Zaza, Aleut, Cree, Haitian Creole, Hawaiian, Innu-aimun, Lakota, Karachay-Balkar, Karelian, Livvi-Karelian, Ludic, Tatar, Vepsian, Guarani, Nahuatl, Quechua

şùppôrtś  
maný  
diffěreñt  
lǎṅguåǵęs  
žtǽĩă



## SPANISH

La imágen se consigue retirando material de la plancha o matriz con distintas herramientas: entre

## FRENCH

Cet art graphique consiste à inciser ou à creuser à l'aide d'un outil ou d'un mordant une matrice.

## RUSSIAN

Существуют разные виды гравировки камня: ручная гравировка камня, лазерная грави-

## BULGARIAN

Материалите, които могат да се използват за гравирание са гърво, сребро, злато, мед,

## FINNISH

Kaivertajat käyttävät karkeastusta teräksestä valmistettua työkalua, kaiverrinta, leikkaamaan

## SWEDISH

Detta ska skiljas från etsning, där man nyttjar en liknande etsnål för att skapa kanaler ner till etsplå-





TABULAR FIGURES

NUMERATORS

DENOMINATORS

SUPERSCRIPTS

SUBSCRIPTS

CASE SENSITIVE

DLIG

SS01 – Alternative angles

SS02 – Tilted letters

SS03 – Alternative Latin E

SS04 – Straight j

SS05 – Romanian Comma Accent

SS06 – Dutch IJ

SS07 – Catalan Ldot

SS08 – Turkish i

SS09 – Bashkir localization

SS010 – Chuvash localization

SS011 – Bulgarian localization

SS012 – Serbian localization



1234567890

H12345

H12345

H12345

H12345

[{(H)}]

1/2 1/4 1/7

F M W Y

É Ê Ø Æ

E Æ Œ

Lj j ffj nj j

Șș Țț

IJ ij ÍJ ij İj

L·L l·l

i

Ff ƷƷ Çç

Çç

ФВГДЗИКТЩЮ

Б



1234567890

H<sup>12345</sup>

H<sub>12345</sub>

H<sup>12345</sup>

H<sub>12345</sub>

[{(H)}]

½ ¼ ⅓

F M W Y

É Ê Ø Æ

E Æ Œ

Lj j ffj nj j

Șș Țț

IJ ij ÍJ ij İj

L·L l·l

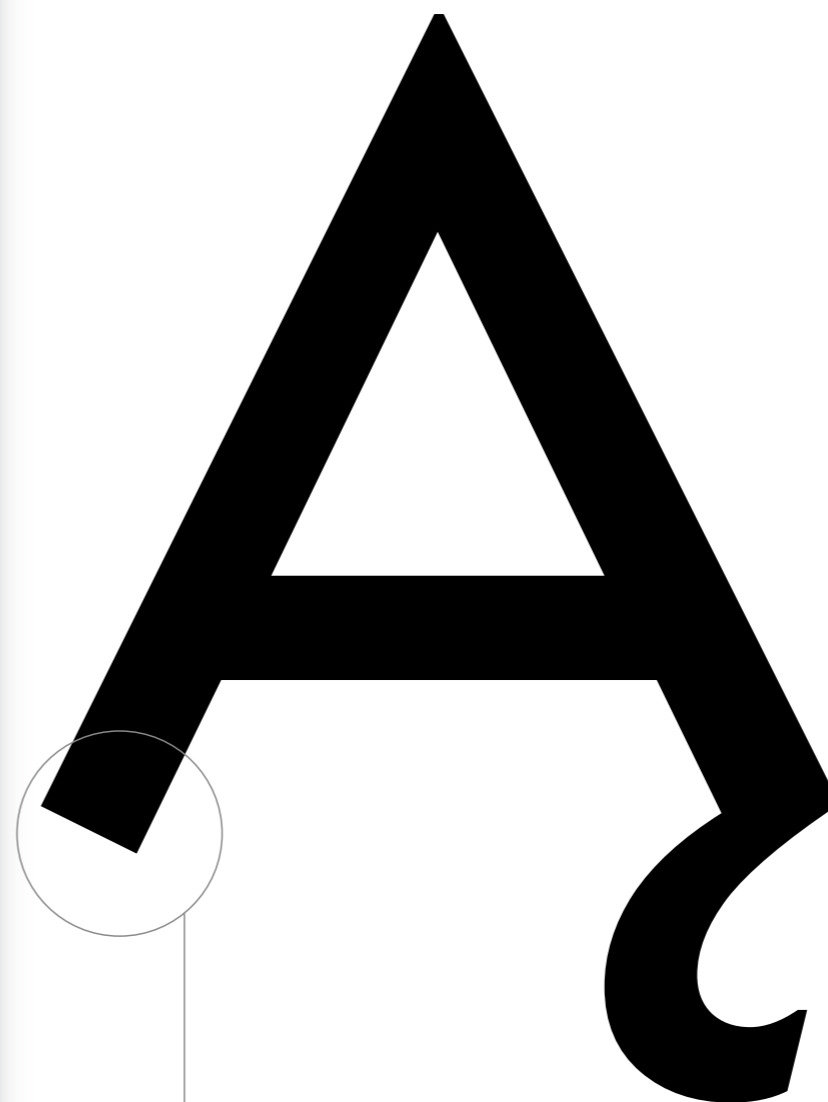
i

Ff ƷƷ Çç

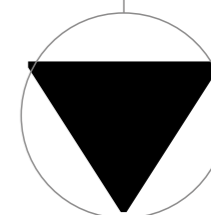
Çç

ФВгдзиктщю

Б

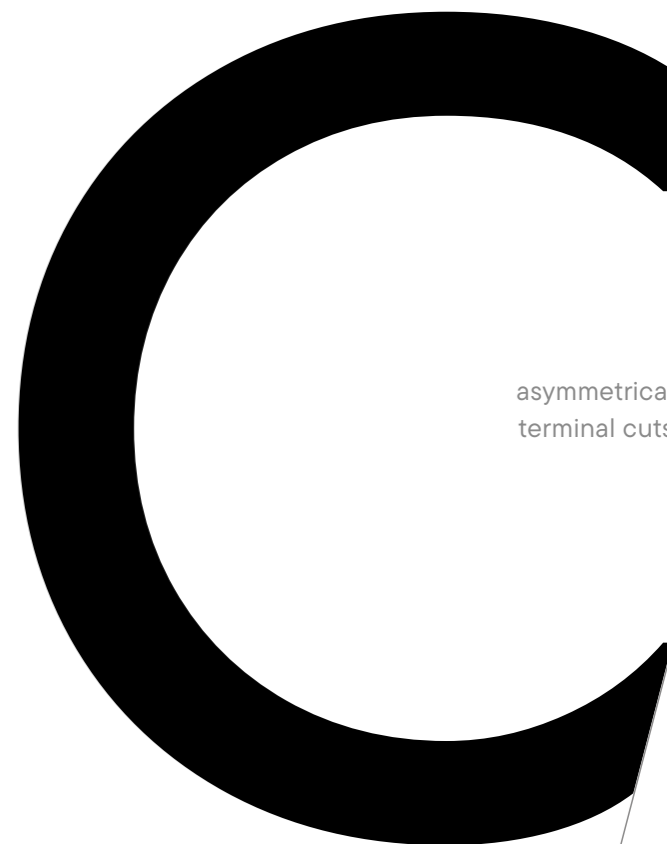


triangle dots



90° stroke cuts

asymmetrical terminal cuts







TypeType company was founded in 2013 by Ivan Gladkikh, a type designer with a 10 years' experience, and Alexander Kudryavtsev, an experienced manager. Over the past 10 years we've released more than 75+ families, and the company has turned into a type foundry with a dedicated team.

Our mission is to create and distribute only carefully drawn, thoroughly tested, and perfectly optimized type-faces that are available to a wide range of customers.

Our team brings together people from different countries and continents. This cultural diversity helps us to create truly unique and comprehensive projects.

Copyright © TypeType Foundry 2013–2024.  
All rights reserved.  
For more information about our fonts,  
please visit our website  
[www.typetype.org](http://www.typetype.org)

Most of the texts used in this specimen  
are from Wikipedia.



