

**Q**

2026

*TT Qurdisma*



Meet the new TT Qurdisma—a sinuous and living font reminiscent of a whimsical plant!

TT Qurdisma is an experimental display font that sprouted in the greenhouse of our Creative Lab. The experiment was based on the idea of mixing two random parameters into a single concept: “tight spacing” and “true italic”. The result is a font with a functional character set and a unique personality full of beautiful details.

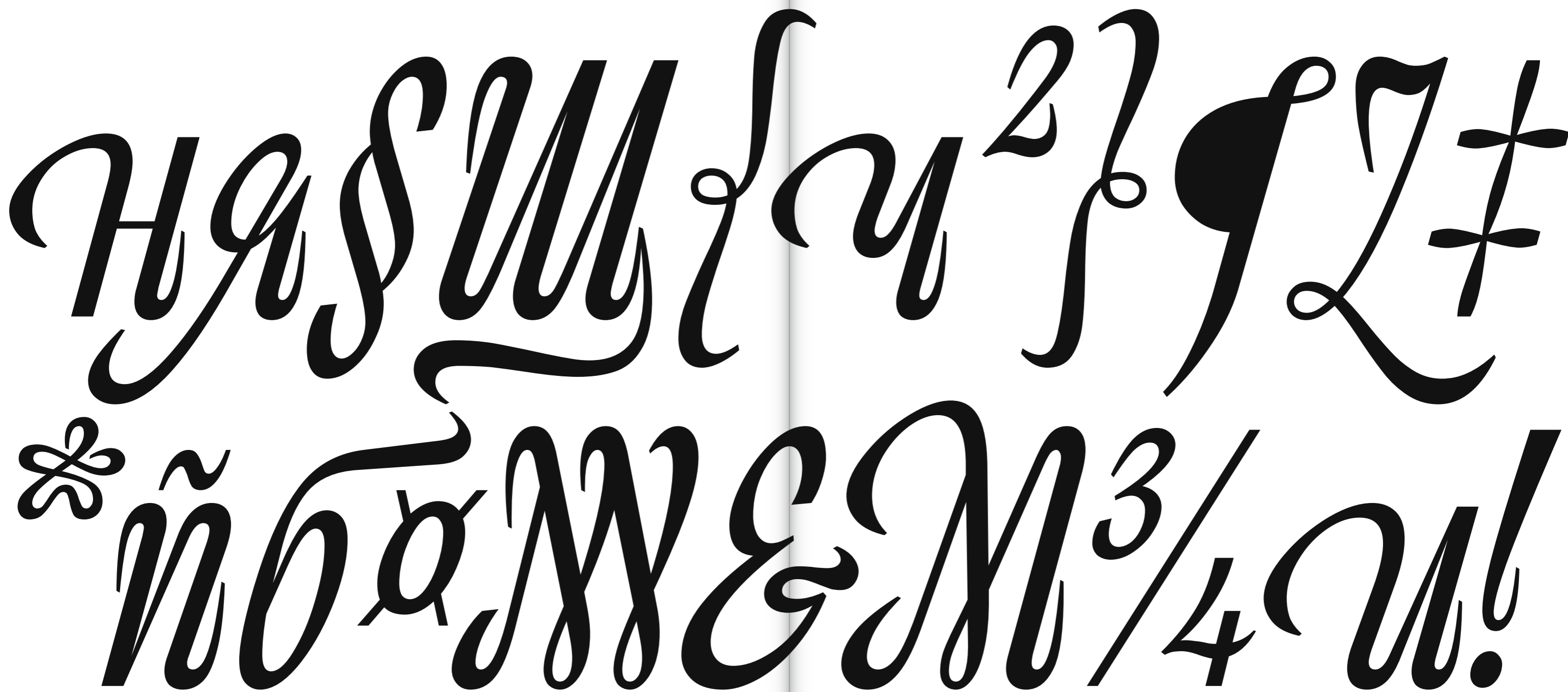
The typeface’s name comes from the Greek κούρδισμα (sinuous). It is a narrow, dense font with glyphs that twist inward. The design is inspired by flora (seaweed, ferns, succulents). The winding, smooth contours give rise to a botanical ornament. The round characters are more slanted than the

upright ones, adding even more dynamism. The uppercase letters have a more complex rhythm due to their twisted forms and abundance of loops, while the lowercase letters look calmer, as they frequently repeat a similar element—an arch with a “tentacle” at the end of the stroke.

The font consists of one italic font style, the graphics of which reference the forms of a true italic. The letter ‘a’ in the base set is double-story, but there is a stylistic set with a single-story version. We also added two versions of the eszett (ß), swash alternates for certain letters, and ligatures.

TT Qurdisma is a decorative font ideally suited for fashion, special cultural projects, or branding.

TT Qurdisma





TT Qurdisma includes:

- 1 italic style
- 464 glyphs
- 19 OpenType features
- Support for over 120 languages

*Aa*

TT Qurdisma  
600 pt

*Aa Bb Cc Dd Ee Ff Gg*  
*Hh Ii Jj Kk Ll Mm Nn*  
*Oo Pp Qq Rr Ss Tt Uu*  
*Vv Ww Xx Yy Zz*  
*0123456789*  
*@# \$ % & \* ! ?*

TT Qurdisma  
108 pt



*The Quick*  
*QUICK*  
*BUNNY*

TT Qurdisma  
192 pt

256 PT

*Flower*

128 PT

*first evolved  
 between 150*

64 PT

*and 190 million years ago,  
 in the Jurassic. Flowers  
 replaced non-flowering  
 plants in many ecosystems*

TT Qurdisma

TT Qurdisma supports more than 120 languages.

## CYRILLIC

Russian, Belarusian, Bosnian, Bulgarian, Macedonian, Serbian, Ukrainian, Karachay-Balkar, Khvarshi, Kumyk, Nogai, Erzya, Mordvin-moksha, Rusyn, Montenegrin

## LATIN

English, Albanian, Basque, Danish, French, German, Irish, Italian, Luxembourgish, Norwegian, Portuguese, Spanish, Swedish, Swiss German, Uzbek (lat), Acehnese, Banjar, Betawi, Bislama, Boholano, Cebuano, Chamorro, Fijian, Filipino, Hiri Motu, Ilocano, Indonesian, Javanese, Khasi, Malay, Minangkabau, Nauruan, Nias, Palauan, Rohingya, Sundanese, Tagalog, Tetum, Tok Pisin, Uyghur, Afar, Asu, Aymara, Bemba, Bena, Chiga, Embu, Gusii, Kabverdianu, Kalenjin, Kinyarwanda, Kirundi, Kongo, Luo, Luyia, Machame, Makhuwa-Meetto, Makonde, Malagasy, Mauritian Creole, Morisyen, Ndebele, Nyankole, Oromo, Rombo, Rundi, Rwa, Samburu, Sango, SanguSena, Seychellois Creole, Shambala, Shona, Soga, Somali, Sotho, Swahili, Swazi, Taita, Tsonga, Tswana, Vunjo, Xhosa, Zulu, Alsatian, Aragonese, Breton, Cornish, Corsican, Friulian, Gaelic, Galician, Interlingua, Judaeo-Spanish, Ladin, Leonese, Manx, Occitan, Retho-Romance, Romansh, Scots, Volapük, Walloon, Cree, Haitian Creole

*süppört  
månj  
dijferènt  
længüàgës*

## FRENCH

*Très tôt, les fleurs ont attiré l'attention des humains, qui les utilisent et les cultivent pour la parure (couronne de fleurs), pour l'ornementation intérieure et extérieure.*

## SWEDISH

*Stödblad kan sitta vid blomskäftets bas och blad på själva skäftet kallas förblad. Blomaxeln är den del där skäftet övergår i blomman. Blommans blad sitter vanligen*

## BELARUSIAN

*Кветка ўяўляе сабой відазменены, ска-  
рочаны і абмежаваны ў росце спора-  
носны парастак, прыстасаваны для  
ўтварэння спор, гамет і палавога*

## SERBIAN

*На потпуно развијеном цвету разли-  
кујемо цветну осу, на чијем се вршном  
делу налазе скраћене интернодије које  
носе густо збијене цветне листиће.*

## PORTUGUESE

*A flor típica é composta por quatro tipos  
de folhas modificadas, tanto estrutural  
como fisiologicamente, para produzir e  
proteger os gametas: sépalas, pétalas.*

## DANISH

*Støvdragerne danner pollen, som ved bes-  
tøvningen når frem til frugtanlæggets stø-  
vfang. Der spirer det og danner et pollen-  
rør, som fører sædcellerne frem til ægcellen*



LATIN UPPERCASE

A B C D E F G H I J K L M N O P Q R S T U V W X Y Z

LATIN LOWERCASE

a b c d e f g h i j k l m n o p q r s t u v w x y z

FIGURES

0 1 2 3 4 5 6 7 8 9 0 1 2 3 4 5 6 7 8 9

CYRILLIC UPPERCASE

А Б В Г Д Е Ё Ж З И Й К Л М Н О П Р С Т У Ф Х Ц  
Ч Ш Щ Ъ Ы Ь Э Ю Я Ђ Ѓ Ѕ І І Ј Љ Њ Ћ Ї Ў

CYRILLIC LOWERCASE

а б в г д е ё ж з и й к л м н о п р с т у ф х ц  
ч ш щ ъ ы ь э ю я ђ ѓ ѕ і і ј љ њ ы ѱ ѱ ѱ

EXTENDED LATIN

Á Â Ã Ä Å Æ Ç È É Ê Ë Ì Í Î Ï Ñ Ò Ó Ô Õ Ö Ø Ù Ú Û Ü Ý Þ  
á â ã ä å æ ç è é ê ë ì í î ï ð ñ ò ó ô õ ö ø ù ú û ü ý þ

PUNCTUATION

.,:;?!j?i\*'"",, ' ' " < > « » • - - - -  
( ) [ ] { } | / † ‡ / \ # № & § ¢ © ® ™ @ ª °

PUNCTUATION

.,:;?!j?i\*'"",, ' ' " < > « » • - - - -  
( ) [ ] { } | / † ‡ / \ # № & § ¢ © ® ™ @ ª °

MATH SYMBOLS

- + < > = x ÷ % ‰ ° /

CURRENCIES

฿ ¢ \$ € £ ₪ ₮ ₯ ₰ ₱ ₲ ₳ ₴ ₵ ₶ ₷ ₸ ₹



NUMERATORS

H1234

H<sup>1234</sup>

DENOMINATORS

H1234

H<sub>1234</sub>

SUPERSCRIPTS

H1234

H<sup>1234</sup>

FRACTIONS

1/2 3/4

½ ¾

ORDINALS

2<sup>ao</sup>

2<sup>ao</sup>

STANDARD LIGATURES

fb fh fi fj fl ft

fb fh fi fj fl ft

DISCRETIONARY LIGATURES

Ca La Nn Tt Th Kl Ca ka

Ca La Nn Tt Th Kl Ca ka

INITIAL FORMS

H Z M W w u b

H Z M W w u b

TERMINAL FORMS

g y d a

g y d a

CONTEXTUAL ALTERNATES

ß 12:34 Qf

ß 12:34 Qf

SS01—Single-storey a

a á â ã

a á â ã

SS02—Alt. Eszett

ß

ß

SS03—Serbian localization

б

б



It's new experimental and display font  
19 0T fe

It's new experimental and display font  
1 Font Style

It's new experimental and display font  
TT Qurdisma

It's new experimental and display font  
2+ Languages

It's new experimental and display font  
Glyphs: 464

Made with love in >>>>>>>> TypeType

Made with love in >>>>>>>> TypeType

Made with love in >>>>>>>> TypeType

Made with love in >>>>>>>> TypeType

Made with love in >>>>>>>> TypeType



TypeType company was founded in 2013 by Ivan Gladkikh, a type designer with a 10 years' experience, and Alexander Kudryavtsev, an experienced manager. Over the past 10 years we've released more than 75+ families, and the company has turned into a type foundry with a dedicated team.

Our mission is to create and distribute only carefully drawn, thoroughly tested, and perfectly optimized type-faces that are available to a wide range of customers.

Our team brings together people from different countries and continents. This cultural diversity helps us to create truly unique and comprehensive projects.

Copyright © TypeType Foundry 2013–2026.  
All rights reserved.  
For more information about our fonts,  
please visit our website  
[www.typetype.org](http://www.typetype.org)

Most of the texts used in this specimen  
are from Wikipedia.

